

JOBLOG_COPY_KEEP

Technical Brief

Release 5.1 December 2011

JOBLOG_COPY_KEEP IMPLEMENTATION CHANGES	3
Background	3
New Implementation	3
JOBLOG_COPY_KEEP Configuration Option	4
Removal of USBMJPRTF and UCMSVRPRTF print files.	4
Job Options Affecting Job Log Output	5
Example	6
4.2.0 MVS Manager	6
Joblog for USBMJOB in 4.2.0	6
UCMSINIT joblog : 4.2.0	8
USBMJOB User Output : 4.2.0	10
New Implementation Windows Universal Command Manager	13
Joblog for USBMJOB : New Implementation	13
UCMSINIT job log : New Implementation	17
USBMJOB User Output : New Implementation	19

JOBLOG_COPY_KEEP Implementation Changes

With Indesca 5.1 the ability to identify the job log created by the JOBLOG_COPY_KEEP option in the output queue on the i5 system has been improved.

Background

In prior releases, the job log for the job submitted by the Universal Submit Job command and, optionally, the Server Initiator job log are returned to the manager that initiated the server job. Setting the JOBLOG_COPY_KEEP server configuration option to YES results in copies of both of the job logs being sent to the printer files on the system on which the server runs. With JOBLOG_COPY_KEEP set to NO, the default setting, no copy of either job log is kept on the system on which the server is running.

With JOBLOG_COPY_KEEP set to YES,

- Spool files are associated with the user profiles generating the job logs. This is normally the user profile that initiated the job, not the user profile to which a job is switched.
- Log Files are stored in a Universal Command printer file associated with the QEZJOBLOG output queue. UCMSINT job logs are sent to UCMSVRPRTF printer file and USBMJOB job logs are sent to USBMJPRTF printer file
- The system uses QPRTJOB as the job name, not the name of the job that generated the output.
- The job number associated with the output is the QPRTJOB job. There may be multiple QPRTJOB jobs running simultaneously in the system with different job numbers.

These associations make finding a particular job log very difficult when a large volume of job logs are sent to the job log output queue. This does not fulfill audit requirements for tracking the process execution flow by user id.

New Implementation

The Job Log Copy Keep option has been modified to allow the system to generate the job log spooled output files for both the UCMSINIT job and the job initiated by USBMJOB, UJOBINIT. The job logs for each of the jobs are captured before job log spool file creation. The Universal Command Server program processes the UCMSINIT job log and the USBMJOB program processes the UJOBINIT job log. The processed job logs are sent to the Universal Command Manager via stderr. The Universal Command Server and USBMJOB, after capturing and processing the job log, allows the UCMSINIT and UJOBINIT programs to generate spooled job log files.

The new implementation results in system generated job logs that are stored in QEZJOBLOG output queue using the QPJOBLOG print file. The system generates the initiator jobs, UCMSINIT and UJOBINIT, second job logs as part of the job's end-of-job processing, thereby preserving the association between the initiator job and its job log. This change makes it easy to locate job logs using standard system tools and commands. It also simplifies automated archiving and restoration of job logs, i.e. spool files, using off-the-shelf products such as BRMS. Generation of these spooled job log files will, in turn, allow

- The WRKOUTQ command to display the job number, user ID and job name of the job for which the log was created.
- The WRKSPLF command to search for the job log based on the original job's information instead of the spooling and QPRTJOB information.
- The job log to be displayed by the WRKJOB command.

There may be additional i5 commands that may be used to display job logs using job_number, user_id and job_name.

JOBLOG_COPY_KEEP Configuration Option

The definition of JOBLOG_COPY_KEEP has not changed. However, the results of the setting, when JOBLOG_COPY_KEEP = YES, will be semantically different. In prior releases, Universal Command spooled a copy of the job log to the QEZJOBLOG output queue. USBMJOB used printer file USBMJPRTF and the Universal Command Server used printer file UCMSVRPRTF. The new implementation results in system generated job logs that are stored in QEZJOBLOG output queue using the QPJOBLOG print file.

Regardless of the JOBLOG_COPY_KEEP setting, USBMJOB and the Universal Command Server will generate 80 characters wide, formatted output job logs. This is the job log sent back to the Universal Command Manager via stderr. USBMJOB always returns a job log and Universal Command Server returns a job log if the JOB_LOG Universal Command Server configuration value is set to ALWAYS or ERROR. See the JOB_LOG configuration option in the Universal Command Reference Guide for details. The behavior described in this paragraph is consistent with the prior releases.

Removal of USBMJPRTF and UCMSVRPRTF print files.

Universal Command no longer requires Stonebranch specific print files. These print files will be deleted as a result of removal of the release that required the print files. Removing the print files will not result in the job log deletion as job logs will be spooled and associated with the QEZJOBLOG output queue. If any of these job logs need printing at a future date, the CHGSPLFA command provides the ability to associate the job logs with a different printer file.

Job Options Affecting Job Log Output

JOBMSGQFL set to *PRTWRAP

The JOBMSGQFL option can affect when output is spooled to the job log spool file. When JOBMSGQFL is set to *PRTWRAP, job log messages in the job log message queue are written to the job log spool file before being overwritten in the queue. These messages, once written to the spool file, cannot be read. Therefore, with JOBLOG_COPY_KEEP = YES, the job log sent via stderr with JOBMSGQFL set to *PRTWRAP will be the same as when JOBMSGQFL is set to *WRAP. Stated differently, for job logs returned via stderr with JOBLOG_COPY_KEEP = YES, JOBMSGQFL set to *PRTWRAP is equivalent to JOBMSGQFL set to *WRAP.

The JOBMSGQFL setting does not affect messages written to the job log spool file with JOBLOG_COPY_KEEP set to YES. All job log messages are written to the job log spool file just as if Universal Command were not part of the process.

The JOBMSGQFL default setting is *NOWRAP. When set to *NOWRAP, the operating system ends the job when the job log message queue is full.

USBMJOB

The SBMJOB Encapsulated Configuration Options now include the LOGOUTPUT parameter. The default is the SBMJOB default of *JOBID.

This solution does not force a job log to the job log output queue if LOGOUTPUT is set to *PND either prior to invocation of Stonebranch processes or via the USBMJOB, LOGOUTPUT parameter. Having LOGOUTPUT set to *PND prior to invocation of Stonebranch processes or via the USBMJOB, LOGOUTPUT parameter does not affect job logs returned to the Universal Command Manager.

Example

The following example is taken from the Stonebranch QA environment and describes the current behavior for release 4.3 and below and the new behavior with the implementation of the enhancement request.

Current behavior when using USBMJOB and JOBLOG_COPY_KEEP is set to yes in the ucms conf file on the i5 server.

4.2.0 MVS Manager

```
//SCRIPT DD *  
  USBMJOB CMD(dsplib qatest) JOB(DRO1AJOB) USER(QATEST)  
//SYSIN DD *  
-HOST      QA-AS400V5  
-port      4420  
-USERID    DRO1A  
-pwd       xxxxx  
-SCRIPT    SCRIPT
```

Joblog for USBMJOB in 4.2.0

USBMJOB joblog can be found by displaying spool files for user DRO1A. See below - user of DRO1A, File name of USBMJBRTF in Queue QEZJOBLOG and job name of QPRTJOB. It is found under user DRO1A because this is the user specified for the ucmd server. Other ways to show this are WRKOUTQ OUTQ(QEZJOBLOG) which shows file USBMJPRTF and user DRO1A. The challenge is that this represents the output for job 234892/QATEST/DRO1AJOB with no easy way to identify this from looking at the list of spool files especially when there are 1+ jobs to look at. You must open every file.

Work with All Spooled Files

Type options, press Enter.

1=Send 2=Change 3=Hold 4=Delete 5=Display 6=Release 7=Messages
8=Attributes 9=Work with printing status

Opt	File	User	Device or Queue	User Data	Sts	Total Pages	Cur Page	Copy
—	QSYSPRT	DRO1A	PRT01		RDY	1		1
—	QSYSPRT	DRO1A	PRT01		RDY	1		1
—	QPJOBLOG	DRO1A	QEZJOBLOG	QPADEV0001	RDY	2		1
—	QPJOBLOG	DRO1A	QEZJOBLOG	QPADEV0001	RDY	2		1
—	QPJOBLOG	DRO1A	QEZJOBLOG	QPADEV0001	RDY	4		1
—	QPRTSPLF	DRO1A	PRT01		RDY	1		1
—	QPRTSPLQ	DRO1A	PRT01		RDY	3		1
—	QPRTSPLQ	DRO1A	PRT01		RDY	3		1
█	USBJPRTF	DRO1A	QEZJOBLOG		RDY	3		1

Bottom

Parameters for options 1, 2, 3 or command

====>

F3=Exit F10=View 4 F11=View 2 F12=Cancel F22=Printers F24=More keys

Display Spooled File

```
File . . . . . : USBJPRTF          Page/Line  1/7
Control . . . . . : ██████████      Columns    1 - 78
Find . . . . . : ██████████
*...+...1...+...2...+...3...+...4...+...5...+...6...+...7...+...
Job . . . . . : DRO1AJOB      User . . . . . : QATEST      Number . . . : 234901
Message ID . . . . . : CPF1124      Severity . . . . . : 00
Message type . . . . . : *INFO
Date sent . . . . . : 2010-10-06      Time sent . . . . . : 10.08.21
Message . . . . . : Job 234901/QATEST/DRO1AJOB started on 10/06/10 at 10:08:21
                   in subsystem QBASE in QSYS. Job entered system on 10/06/10 at 10:08:21.
Message ID . . . . . : Erase all input 125      Severity . . . . . : 00
Message type . . . . . : *INFO
Date sent . . . . . : 2010-10-06      Time sent . . . . . : 10.08.21
Message . . . . . : Job 234901/QATEST/DRO1AJOB submitted.
Cause . . . . . : Job 234901/QATEST/DRO1AJOB submitted to job queue QBATCH
                   in QGPL from job 234892/QUSER/UCMSINIT. Job 234901/QATEST/DRO1AJOB was
                   started using the Submit Job (SBMJOB) command with the following job
                   attributes: JOBPTY(5) OUTPTY(5) PRTTXT() RTGDTA(QCMDB) SYSLIBL(UNVPRD420
                   QSYS      QSYS2      QHLPSYS      QUSRSYS) CURLIB(DRO1A) INLLIBL(QGPL
                   QTEMP      QGY) INLASGRP(*NONE) LOG(4 00 *SECLVL) LOGCLPGM(*NO)
```

More...

F3=Exit F12=Cancel F19=Left F20=Right F24=More keys

```

Work with Output Queue

Queue:  QEZJOBLOG      Library:  QUSRSYS      Status:  RLS

Type options, press Enter.
  1=Send  2=Change  3=Hold  4=Delete  5=Display  6=Release  7=Messages
  8=Attributes  9=Work with printing status

Opt  File          User          User Data    Sts  Pages  Copies  Form Type  Pty
--  -
  -   QPJOBLOG      DR01A        QPADEV0001  RDY   2       1     *STD      5
  -   QPJOBLOG      DR01A        QPADEV0001  RDY   4       1     *STD      5
  -   USBMJPRTF     QATEST              RDY   3       1     *STD      5
  -   UCMSVRPRTF   UNVUBR420      RDY   3       1     *STD      5
  -   USBMJPRTF     DR01A              RDY   3       1     *STD      5
  -   UCMSVRPRTF   UNVUBR420      RDY   3       1     *STD      5

Bottom

Parameters for options 1, 2, 3 or command
==>

```

UCMSINIT joblog : 4.2.0

The job log for UCMSINIT is not easily found. In this example it would be Job 234892/QUSER/UCMSINIT ended on 10/06/10 at 10:08:21. JOBLOG_keep is set to always in the ucmds configuration file. The job log is found under user UNVUBR420 work with spool files and file UCMSVRPRTF in queue QEZJOBLOG. You can also find it with WRKOUTQ OUTQ(QEZJOBLOG) file UCMSVRPRTF user UNVUBR420. There is no way to relate this entry to job 234892/QUSER/UCMSINIT. You must open every entry.

Work with All Spooled Files

Type options, press Enter.

1=Send 2=Change 3=Hold 4=Delete 5=Display 6=Release 7=Messages
8=Attributes 9=Work with printing status

Opt	File	User	Device or Queue	User Data	Sts	Total Pages	Cur Page	Copy
█	UCMSVRPRTF	UNVUBR420	QEZJOBLOG		RDY	3		1

Bottom

Parameters for options 1, 2, 3 or command

====>

F3=Exit F10=View 4 F11=View 2 F12=Cancel F22=Printers F24=More keys

Work with Output Queue

Queue: QEZJOBLOG Library: QUSRSYS Status: RLS

Type options, press Enter.

1=Send 2=Change 3=Hold 4=Delete 5=Display 6=Release 7=Messages
8=Attributes 9=Work with printing status

Opt	File	User	User Data	Sts	Pages	Copies	Form Type	Pty
—	UCMSVRPRTF	UNVUBR420		RDY	2	1	*STD	5
—	QPJOBLOG	DRO1A	QPADEV0001	RDY	2	1	*STD	5
—	QPJOBLOG	DRO1A	QPADEV0001	RDY	2	1	*STD	5
—	QPJOBLOG	DRO1A	QPADEV0001	RDY	4	1	*STD	5
—	USBMJPRTF	QATEST		RDY	3	1	*STD	5
—	UCMSVRPRTF	UNVUBR420		RDY	3	1	*STD	5
—	USBMJPRTF	DRO1A		RDY	3	1	*STD	5
█	UCMSVRPRTF	UNVUBR420		RDY	3	1	*STD	5

Bottom

Parameters for options 1, 2, 3 or command

====>

F3=Exit F11=View 2 F12=Cancel F20=Writers F22=Printers
F24=More keys

```
Open Copy Paste Stop Clear Undo Find System Help Terminal Keyboard Print
Display Spooled File
File . . . . . : UCMSVRPRTF          Page/Line  1/7
Control . . . . . :                   Columns    1 - 78
Find . . . . . :
*...+...1...+...2...+...3...+...4...+...5...+...6...+...7...+...
Job . . . . . : UCMSINIT      User . . . : QUSER      Number . . : 234892
Message ID . . . . . : CPF1124      Severity . . . . . : 00
Message type . . . . . : *INFO
Date sent . . . . . : 2010-10-05    Time sent . . . . . : 14.02.50
Message . . . . . : Job 234892/QUSER/UCMSINIT started on 10/05/10 at 14:02:50
in subsystem UNVUBR420 in UNVPRD420. Job entered system on 10/05/10 at
14:02:50.
Message ID . . . . . : CPF9862      Severity . . . . . : 00
Message type . . . . . : *INFO
Date sent . . . . . : 2010-10-06    Time sent . . . . . : 10.08.20
Message . . . . . : Member C4CA38445I added to output file UNVJLP in library
UNVTMP420.
Message ID . . . . . : CPF9862      Severity . . . . . : 00
Message type . . . . . : *INFO
Date sent . . . . . : 2010-10-06    Time sent . . . . . : 10.08.20
Message . . . . . : Member C4CA38445I added to output file UNVJLS in library
More...
F3=Exit  F12=Cancel  F19=Left  F20=Right  F24=More keys
ONLINE 3,22 M DEMO
```

USBMJOB User Output : 4.2.0

The output generated from the USBMJOB can be found by working with jobs for user QATEST . This user is specified as an option for the USBMJOB command. This is typical and acceptable. The file is QPDSPLIB with print queue of PRT01.

```

Work with User Jobs
S10CEE0B
10/06/10 11:51:10

Type options, press Enter.
  2=Change  3=Hold  4=End  5=Work with  6=Release  7=Display message
  8=Work with spooled files  13=Disconnect

Opt  Job          User          Type          -----Status-----  Function
  1  DR01AJOB      QATEST       BATCH         OUTQ
  2  DR01AJOB      QATEST       BATCH         OUTQ
  3  QDFTJOB      QATEST       BATCH         OUTQ
  4  QDFTJOB      QATEST       BATCH         OUTQ
  5  QDFTJOB      QATEST       BATCH         OUTQ
  6  QDFTJOB      QATEST       BATCH         OUTQ
  7  QDFTJOB      QATEST       BATCH         OUTQ
  8  QDFTJOB      QATEST       BATCH         OUTQ
  9  QDFTJOB      QATEST       BATCH         OUTQ
 10  QDFTJOB      QATEST       BATCH         OUTQ
 11  QDFTJOB      QATEST       BATCH         OUTQ
 12  QDFTJOB      QATEST       BATCH         OUTQ
 13  QDFTJOB      QATEST       BATCH         OUTQ
 14  QDFTJOB      QATEST       BATCH         OUTQ
 15  QDFTJOB      QATEST       BATCH         OUTQ
 16  QDFTJOB      QATEST       BATCH         OUTQ
 17  QDFTJOB      QATEST       BATCH         OUTQ
 18  QDFTJOB      QATEST       BATCH         OUTQ
 19  QDFTJOB      QATEST       BATCH         OUTQ
 20  QDFTJOB      QATEST       BATCH         OUTQ
 21  QDFTJOB      QATEST       BATCH         OUTQ
 22  QDFTJOB      QATEST       BATCH         OUTQ
 23  QDFTJOB      QATEST       BATCH         OUTQ
 24  QDFTJOB      QATEST       BATCH         OUTQ
 25  QDFTJOB      QATEST       BATCH         OUTQ
 26  QDFTJOB      QATEST       BATCH         OUTQ
 27  QDFTJOB      QATEST       BATCH         OUTQ
 28  QDFTJOB      QATEST       BATCH         OUTQ
 29  QDFTJOB      QATEST       BATCH         OUTQ
 30  QDFTJOB      QATEST       BATCH         OUTQ
 31  QDFTJOB      QATEST       BATCH         OUTQ
 32  QDFTJOB      QATEST       BATCH         OUTQ
 33  QDFTJOB      QATEST       BATCH         OUTQ
 34  QDFTJOB      QATEST       BATCH         OUTQ
 35  QDFTJOB      QATEST       BATCH         OUTQ
 36  QDFTJOB      QATEST       BATCH         OUTQ
 37  QDFTJOB      QATEST       BATCH         OUTQ
 38  QDFTJOB      QATEST       BATCH         OUTQ
 39  QDFTJOB      QATEST       BATCH         OUTQ
 40  QDFTJOB      QATEST       BATCH         OUTQ
 41  QDFTJOB      QATEST       BATCH         OUTQ
 42  QDFTJOB      QATEST       BATCH         OUTQ
 43  QDFTJOB      QATEST       BATCH         OUTQ
 44  QDFTJOB      QATEST       BATCH         OUTQ
 45  QDFTJOB      QATEST       BATCH         OUTQ
 46  QDFTJOB      QATEST       BATCH         OUTQ
 47  QDFTJOB      QATEST       BATCH         OUTQ
 48  QDFTJOB      QATEST       BATCH         OUTQ
 49  QDFTJOB      QATEST       BATCH         OUTQ
 50  QDFTJOB      QATEST       BATCH         OUTQ
 51  QDFTJOB      QATEST       BATCH         OUTQ
 52  QDFTJOB      QATEST       BATCH         OUTQ
 53  QDFTJOB      QATEST       BATCH         OUTQ
 54  QDFTJOB      QATEST       BATCH         OUTQ
 55  QDFTJOB      QATEST       BATCH         OUTQ
 56  QDFTJOB      QATEST       BATCH         OUTQ
 57  QDFTJOB      QATEST       BATCH         OUTQ
 58  QDFTJOB      QATEST       BATCH         OUTQ
 59  QDFTJOB      QATEST       BATCH         OUTQ
 60  QDFTJOB      QATEST       BATCH         OUTQ
 61  QDFTJOB      QATEST       BATCH         OUTQ
 62  QDFTJOB      QATEST       BATCH         OUTQ
 63  QDFTJOB      QATEST       BATCH         OUTQ
 64  QDFTJOB      QATEST       BATCH         OUTQ
 65  QDFTJOB      QATEST       BATCH         OUTQ
 66  QDFTJOB      QATEST       BATCH         OUTQ
 67  QDFTJOB      QATEST       BATCH         OUTQ
 68  QDFTJOB      QATEST       BATCH         OUTQ
 69  QDFTJOB      QATEST       BATCH         OUTQ
 70  QDFTJOB      QATEST       BATCH         OUTQ
 71  QDFTJOB      QATEST       BATCH         OUTQ
 72  QDFTJOB      QATEST       BATCH         OUTQ
 73  QDFTJOB      QATEST       BATCH         OUTQ
 74  QDFTJOB      QATEST       BATCH         OUTQ
 75  QDFTJOB      QATEST       BATCH         OUTQ
 76  QDFTJOB      QATEST       BATCH         OUTQ
 77  QDFTJOB      QATEST       BATCH         OUTQ
 78  QDFTJOB      QATEST       BATCH         OUTQ
 79  QDFTJOB      QATEST       BATCH         OUTQ
 80  QDFTJOB      QATEST       BATCH         OUTQ
 81  QDFTJOB      QATEST       BATCH         OUTQ
 82  QDFTJOB      QATEST       BATCH         OUTQ
 83  QDFTJOB      QATEST       BATCH         OUTQ
 84  QDFTJOB      QATEST       BATCH         OUTQ
 85  QDFTJOB      QATEST       BATCH         OUTQ
 86  QDFTJOB      QATEST       BATCH         OUTQ
 87  QDFTJOB      QATEST       BATCH         OUTQ
 88  QDFTJOB      QATEST       BATCH         OUTQ
 89  QDFTJOB      QATEST       BATCH         OUTQ
 90  QDFTJOB      QATEST       BATCH         OUTQ
 91  QDFTJOB      QATEST       BATCH         OUTQ
 92  QDFTJOB      QATEST       BATCH         OUTQ
 93  QDFTJOB      QATEST       BATCH         OUTQ
 94  QDFTJOB      QATEST       BATCH         OUTQ
 95  QDFTJOB      QATEST       BATCH         OUTQ
 96  QDFTJOB      QATEST       BATCH         OUTQ
 97  QDFTJOB      QATEST       BATCH         OUTQ
 98  QDFTJOB      QATEST       BATCH         OUTQ
 99  QDFTJOB      QATEST       BATCH         OUTQ
100  QDFTJOB      QATEST       BATCH         OUTQ

More...

Parameters or command
==>

```

```

Work with Job
System: S10CEE0B
Job: DR01AJOB User: QATEST Number: 234891

Select one of the following:

  1. Display job status attributes
  2. Display job definition attributes
  3. Display job run attributes, if active
  4. Work with spooled files

 10. Display job log, if active, on job queue, or pending
 11. Display call stack, if active
 12. Work with locks, if active
 13. Display library list, if active
 14. Display open files, if active
 15. Display file overrides, if active
 16. Display commitment control status, if active

More...

Selection or command
==> 4

```

```

F3=Exit  F4=Prompt  F9=Retrieve  F12=Cancel

```

Work with Job Spooled Files

Job: DRO1AJOB User: QATEST Number: 234891

Type options, press Enter.

- 1=Send 2=Change 3=Hold 4=Delete 5=Display 6=Release 7=Messages
- 8=Attributes 9=Work with printing status

Opt	File	Device or Queue	User Data	Status	Total Pages	Current Page	Copies
1	QPDSPLIB	PRT01		RDY	2		1

Bottom

Parameters for options 1, 2, 3 or command

==>

F3=Exit F10=View 3 F11=View 2 F12=Cancel F22=Printers F24=More keys

Display Spooled File

File : QPDSPLIB Page/Line 1/1
Control : Columns 1 - 78
Find :
*...+...1...+...2...+...3...+...4...+...5...+...6...+...7...+...
5722SS1 V5R4M0 060210 Display Library
Library : QATEST
Type : TEST
Number of objects : 89
Library ASP number : 1
Library ASP device : *SYSBAS
Library ASP group : *SYSBAS
Create authority : *CHANGE
Text description : QA TEST library
Object Type Attribute Size Description
DATE400 *PGM CLE 53248
JOBMEMINFO *PGM CLE 65536
RSTUDM *PGM CLLE 86016
RUNLOOP *PGM CLLE 69632
RUNLOOP2 *PGM CLLE 69632
RUNLOOP3 *PGM CLLE 69632

More...

F3=Exit F12=Cancel F19=Left F20=Right F24=More keys

New Implementation Windows Universal Command Manager

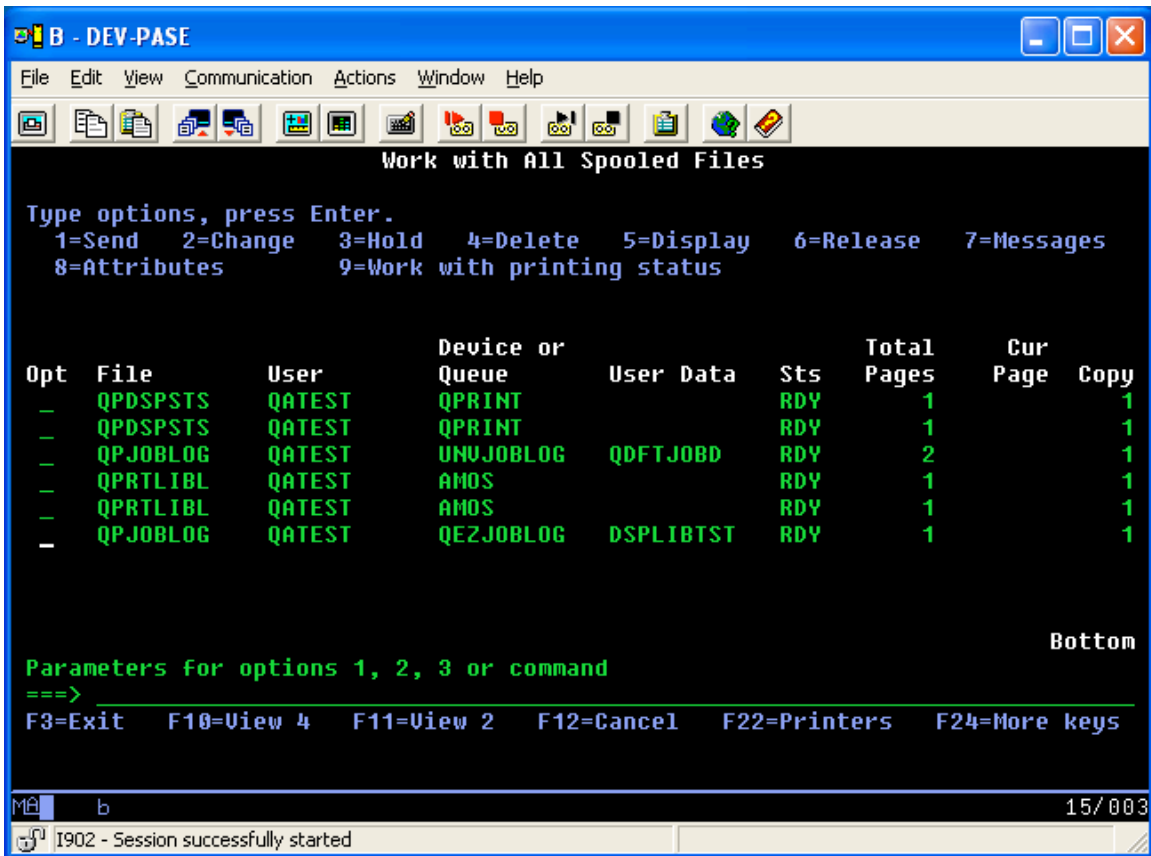
```
ucmd -c "unvprd499/usbmjob cmd(dsplibl) job(dsplibtst) user(qatest)" -u amos -w  
xxxx -i dev-as400v5 -p 4990
```

Joblog for USBMJOB : New Implementation

USBMJOB joblog can be found by displaying spool files for user QATEST. See below - user of QATEST, File name of QPJOBLOG in Queue QEZJOBLOG. It is found under user QATEST because this is the user specified for the USBMJOB USER option. Other ways to show this are WRKOUTQ OUTQ(QEZJOBLOG) which shows file QPJOBLOG and user QATEST. Changing the view for either the Spooled Files screen or the Output Queue screen now displays the job number for the executed job.

Changes to existing behavior:

- File name changes from USBMJPRTF to QPJOBLOG.
- User changes from the user specified for the UCMD server to the user associated with the USBMJOB command. In this example qatest is used instead of amos.
- The output queue remains the default system job log output queue, in this case QEZJOBLOG.
- The job number changes from the job number of the QPRTJOB to the job number of the UJOBINIT job. UJOBINIT is the job submitted by USBMJOB.
- The jobname changes from QPRTJOB to the jobname of the UJOBINIT job, in this case DSPLIBTST.
- The User Data changes from blanks to that supplied by the system.
- Job log time and date changes from the time when the spool file was generated by the USBMJOB program to the time and date stamp applied by the system job log generation process.



```

B - DEV-PASE
File Edit View Communication Actions Window Help
Display Spooled File
File .....: QPJOBLOG                               Page/Line 1/1
Control .....                               Columns 1 - 130
Find .....
*.....1.....2.....3.....4.....5.....6.....7.....8.....9.....0.....1.....2.....3
5722SS1 U5R3H0 040528                               Job Log                               S10CEDFB 10/07/10 12:38:14 Page 1
Job name .....: DSPLIBTST User .....: QATEST Number .....: 206849
Job description .....: QDFTJOB0 Library .....: QGPL
MSGID TYPE SEV DATE TIME FROM PGM LIBRARY INST TO PGM LIBRARY INST
CPF1124 Information 00 10/07/10 12:38:14.162176 QWTP1IPP QSYS 061C *EXT *N
Message .....: Job 206849/QATEST/DSPLIBTST started on 10/07/10 at
12:38:14 in subsystem QBASE in QSYS. Job entered system on 10/07/10 at
12:38:13.
CPI1125 Information 00 10/07/10 12:38:14.170392 QWTPCRJA QSYS 0108 *EXT *N
Message .....: Job 206849/QATEST/DSPLIBTST submitted.
Cause .....: Job 206849/QATEST/DSPLIBTST submitted to job queue QBATCH
in QGPL from job 206848/UNVUBR499/UCMSINIT. Job 206849/QATEST/DSPLIBTST was
started using the Submit Job (SBJJOB) command with the following job
attributes: JOBPTY(5) OUTPTY(5) PRITXT() RTGDTA(QCMDB) SYSLIBL(UNVPRD499
QSYS QSYS2 QHLPSYS QUSRSYS CURLIB(AMOS) INLLIBL(QGPL
QTEMP QGY LOG(4 00 *SECLVL) LOGCLPGM(*NO) INQMSGRPY(*RQD)
OUTQ(AMOS/AMOS) PRIDEV(QPRINT) HOLD(*NO) DATE(*SYSVAL) SWS(00000000)
HSCQ(QUSRSYS/AMOS) CCSID(65535) SRTSEQ(*N/*HEX) LANGID(ENU) CNTRYID(US)
JOBMSGQMX(16) JOBMSGQFL(*NOWRAP) ALWMLTTHD(*NO) INLSPGRP(*NONE)
More...
F3=Exit F12=Cancel F19=Left F20=Right F24=More keys
MA b 19/043
I902 - Session successfully started

```

A - DEV-PASE

File Edit View Communication Actions Window Help

Work with Output Queue

Queue: QEZJOBLOG Library: QUSRSYS Status: RLS

Type options, press Enter.
 1=Send 2=Change 3=Hold 4=Delete 5=Display 6=Release 7=Messages
 8=Attributes 9=Work with printing status

Opt	File	User	User Data	Sts	Pages	Copies	Form Type	Pty
-	QPJOBLOG	AMOS	QDFTJOB0	RDY	1	1	*STD	5
-	QPJOBLOG	UNUUBR499	UCMSINIT	RDY	3	1	*STD	5
-	QPJOBLOG	AMOS	DSPLIBTST	RDY	1	1	*STD	5
-	QPJOBLOG	UNUUBR499	UCMSINIT	RDY	3	1	*STD	5
█	QPJOBLOG	QATEST	DSPLIBTST	RDY	1	1	*STD	5
-	QPJOBLOG	UNUUBR499	UCMSINIT	RDY	3	1	*STD	5

Bottom

Parameters for options 1, 2, 3 or command
 ==>

F3=Exit F11=View 2 F12=Cancel F20=Writers F22=Printers
 F24=More keys

14/003

Connected to remote server/host DEV-A5400V5 using port 23


```

B - DEV-PASE
File Edit View Communication Actions Window Help

Work with All Spooled Files

Type options, press Enter.
 1=Send  2=Change  3=Hold  4=Delete  5=Display  6=Release  7=Messages
 8=Attributes  9=Work with printing status

Opt  File          File Nbr  Job          User          Number
--  -
 1  QPDSPSTS        1  QDFTJOB0    QATEST        148245
 1  QPDSPSTS        1  QDFTJOB0    QATEST        148330
 1  QPJOBLOG        1  QDFTJOB0    QATEST        148333
 1  QPRTLIBL        1  MYLIBDSP    QATEST        200447
 1  QPRTLIBL        1  DSPLIBTST  QATEST        206849
 2  QPJOBLOG        2  DSPLIBTST  QATEST        206849

Bottom

Parameters for options 1, 2, 3 or command
==>
F3=Exit  F10=View 2  F11=View 4  F12=Cancel  F22=Printers  F24=More keys

15/003
I902 - Session successfully started

```

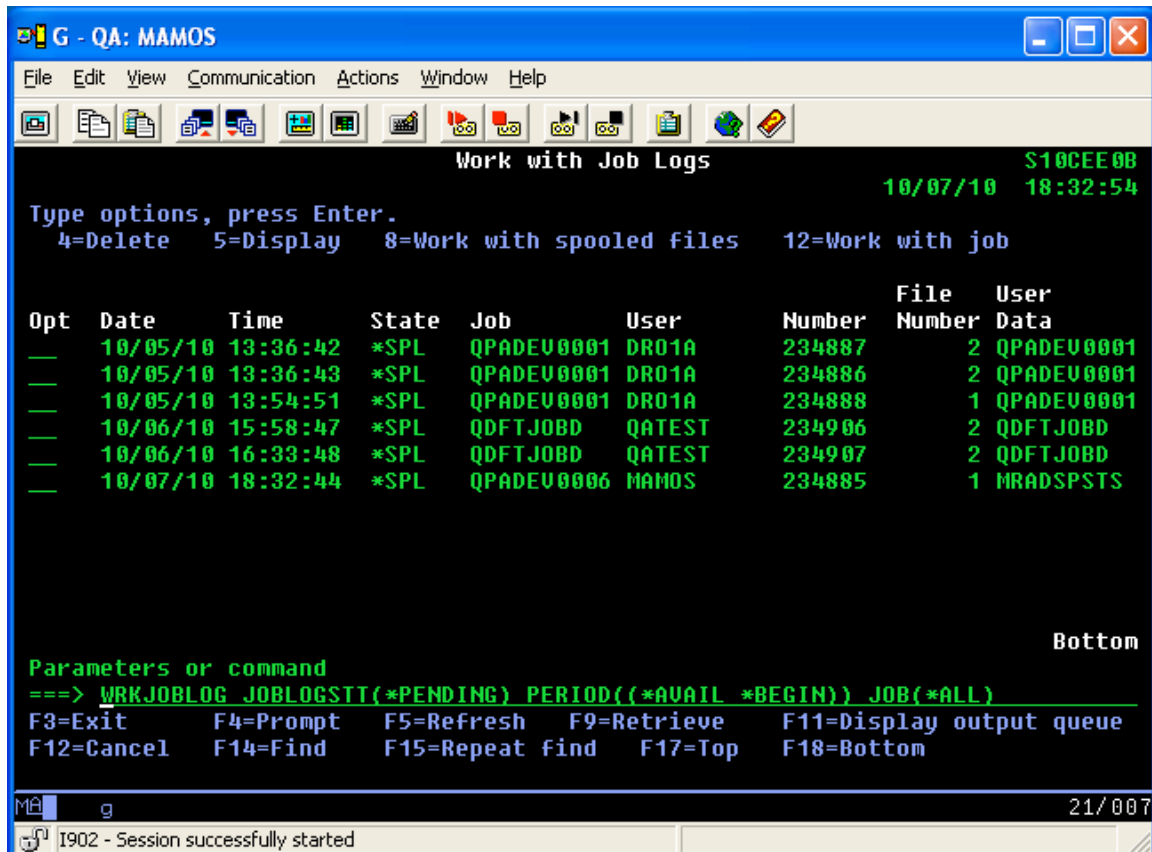
UCMSINIT job log : New Implementation

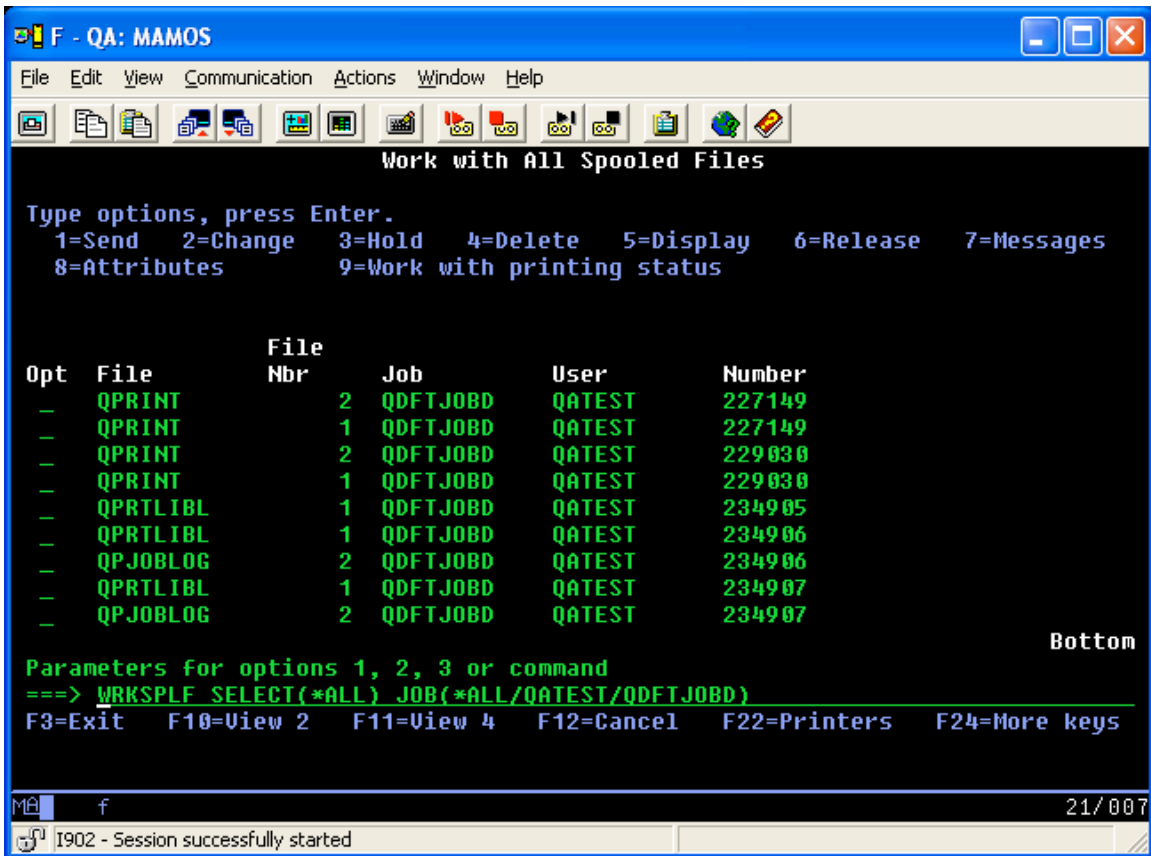
The first screen shot shows using the Work with Job Logs command to locate a job log. The second example shows use of the WRKSPLF command to identify a job log. If a specific job number had been specified instead of *ALL, the correct job displays because the output now has the UCMSINIT job number associated with it instead of the job number for the job spooling the output.

Changes to existing behavior:

- File name changes from UCMSVRPRTF to QPJOBLOG.
- The user will remain to be the user associated with the UNVSRV job, in this case UNVUBR420. UCMSINIT inherits the UNVSRV job's user.
- The output queue remains the default system job log output queue, in this case QEZJOBLOG.
- The job number changes from the job number of the QPJOBLOG to the job number of the UCMSINIT job.

- The jobname changes from QPRTJOB to UCMSINIT.
- The User Data changes from blanks to that supplied by the system.
- Job log time and date changes from the time when the spool file was generated by the UCMSRV program to the time and date stamp applied by the system job log generation process.





USBMJOB User Output : New Implementation

There are no changes to the handling of the USBMJOB User output in the new implementation.