



Indesca and Infitran

Features Overview

Indesca and Infitran
Version 4.1.0

Document Name	Indesca and Infitran 4.1.0 Features Overview
Document ID	unv-overview-4100
Products	Indesca and Infitran 4.1.0

Copyright © 2010 by Stonebranch, Inc.

This document contains proprietary information that is protected by copyright. All rights reserved. No part of this publication may be reproduced, transmitted or translated in any form or language or by any means, electronic or mechanical, including photocopy, recording, or any information storage and retrieval system, without permission, in writing, from the publisher. Requests for permission to make copies of any part of this publication should be mailed to:

Stonebranch, Inc.
950 North Point Parkway, Suite 200
Alpharetta, GA 30005 USA
Tel: (678) 366-7887
Fax: (678) 366-7887

Stonebranch, Inc.® makes no warranty, express or implied, of any kind whatsoever, including any warranty of merchantability or fitness for a particular purpose or use

The information in this documentation is subject to change without notice.

Stonebranch shall not be liable for any errors contained herein or for incidental or consequential damages in connection with the furnishing, performance or use of this document.

All products mentioned herein are or may be trademarks of their respective owners.



Contents

Contents	3
Introduction	4
Features	5
Indesca for an SAP Environment.....	5
Indesca for iSeries.....	5
Infitran	5
Infitran for iSeries	6
Indesca and Infitran	7
I-Management Console	8
I-Activity Monitor	9
Platform Support	10
Platform Support Changes	10
Operational Changes	11
New License Keys	11

Introduction

Indesca and Infitran 4.1.0 provides a set of features and enhancements that helps address the most challenging problems faced in distributed workload management and file transfer today.

With our focus on providing solutions for distributed workload management and managed file transfer, in this release we introduce Indesca and Infitran to our existing and new customers. New documents are available that provide overviews of Indesca and Infitran, mapping these new solutions to the existing components that make up each solution.

This release contains several new features along with maintenance deemed critical for both Indesca and Infitran components.

For additional information on Indesca and Infitran 4.1.0, please contact your Stonebranch representative or send an email to info@stonebranch.com.

Features

This section provides a summary of the features included in Indesca and Infitran 4.1.0.

Indesca for an SAP Environment

XBP 3.0

Indesca for an SAP environment has been updated with the latest version of XBP, which is 3.0.

SAP Application support

Support for SAP application logs and exit codes, which are now available in XBP 3.0, has been added in order to support the SAP applications that deploy mass activity functionality.

Mass Activity

Generic support for SAP 'mass activity' functionality in order to support SAP solutions such as Insurance Collections/Disbursements (FS-CD).

Indesca for iSeries

Dual Job Log

Indesca for iSeries can now be configured to leave a copy of the processes job log on the iSeries machine for local availability while at the same time copying the job log to the manager system.

Infitran

Performance Enhancements

Major performance enhancements between record-oriented file systems when transferring large amounts of data have been added.

Licence Key errors

Errors caused by license keys such as expiration or invalid keys will now cause an exit code of 25 so that errors are easily identifiable. This matches the exit code that the other Stonebranch components issue for license errors.

exec and execsap

License keys are no longer required to execute Indesca or Indesca for an SAP environment if they are initiated from Infitran's exec or execsap command.

Infitran for iSeries

The iSeries port has been updated to include the latest 3.2 feature set available on the UNIX, Windows, and z/OS platforms.

Customizable Logging

This feature set allows for the creation of custom log files based on messages from session- and file-related commands (open, close, copy, copydir, cd, delete, rename, and attrib), thus providing additional flexibility to meet audit and reporting needs. New commands include openlog, echolog, logdata, and closelog.

Move Command

The move command will automatically delete the source file after a successful copy operation.

Date Variables

Date variables are available in the FORFILES loop.

Data Elements

The savedata and appenddata commands allow you to write each line of a data element to a file on disk. The exec command can now store standard output and error to a data element.

UUID

Generated UUIDs are available to the script through a new built-in variable `_uuid`.

FORFILES Attributes

File size and creation and modification date and time attributes are available for the `_file` variable.

New Variable

_lastmsg contains the messages of the last session or file related commands.

Indesca and Infitran

The following items have been added to both Indesca and Infitran and may impact one or more of the shared Universal Components.

Berkley Database

The version of Berkley database used has been updated to version 4.8.24. This affects all Universal Components that utilize a database for storage.

Ubroker Log Files

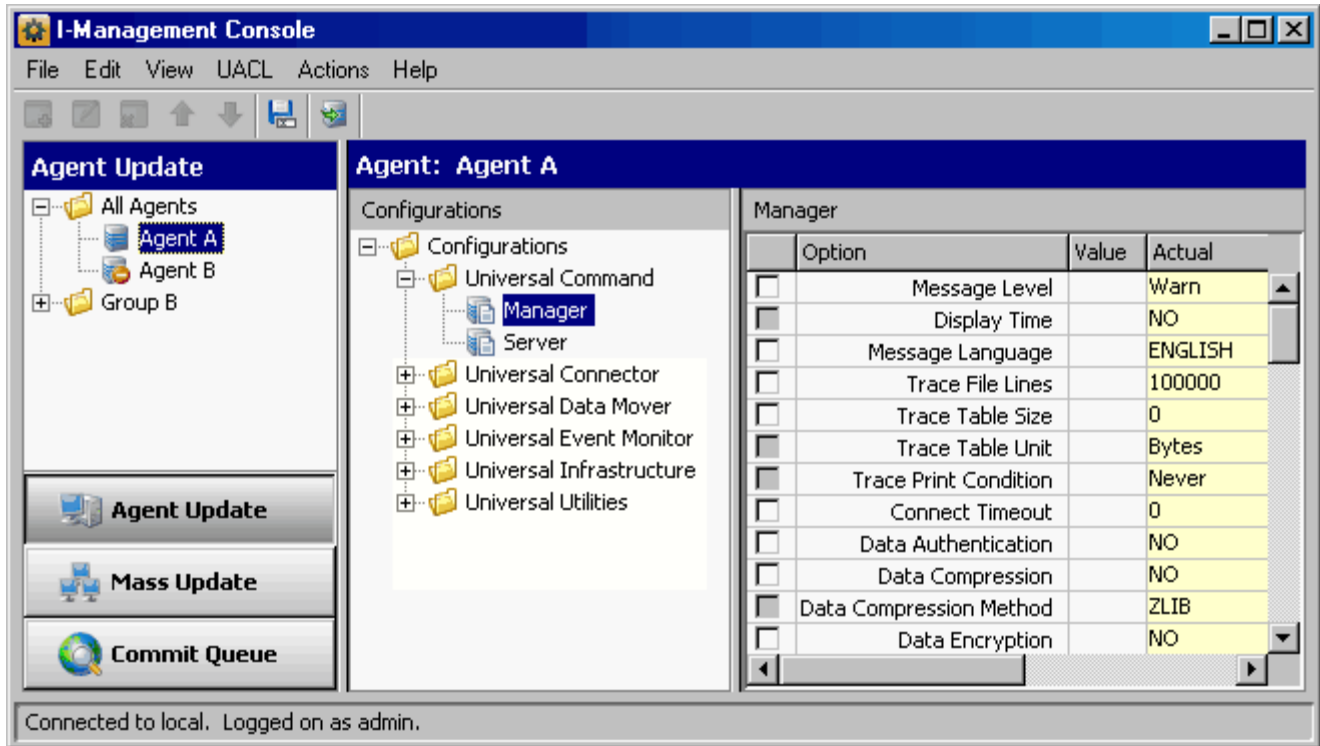
The number of generations of log files to keep for the Universal Broker is now configurable.

Overview

Overview documents have been created to provide high level descriptions of Indesca and Infitran and to map the solutions with the existing Universal Components.

I-Management Console

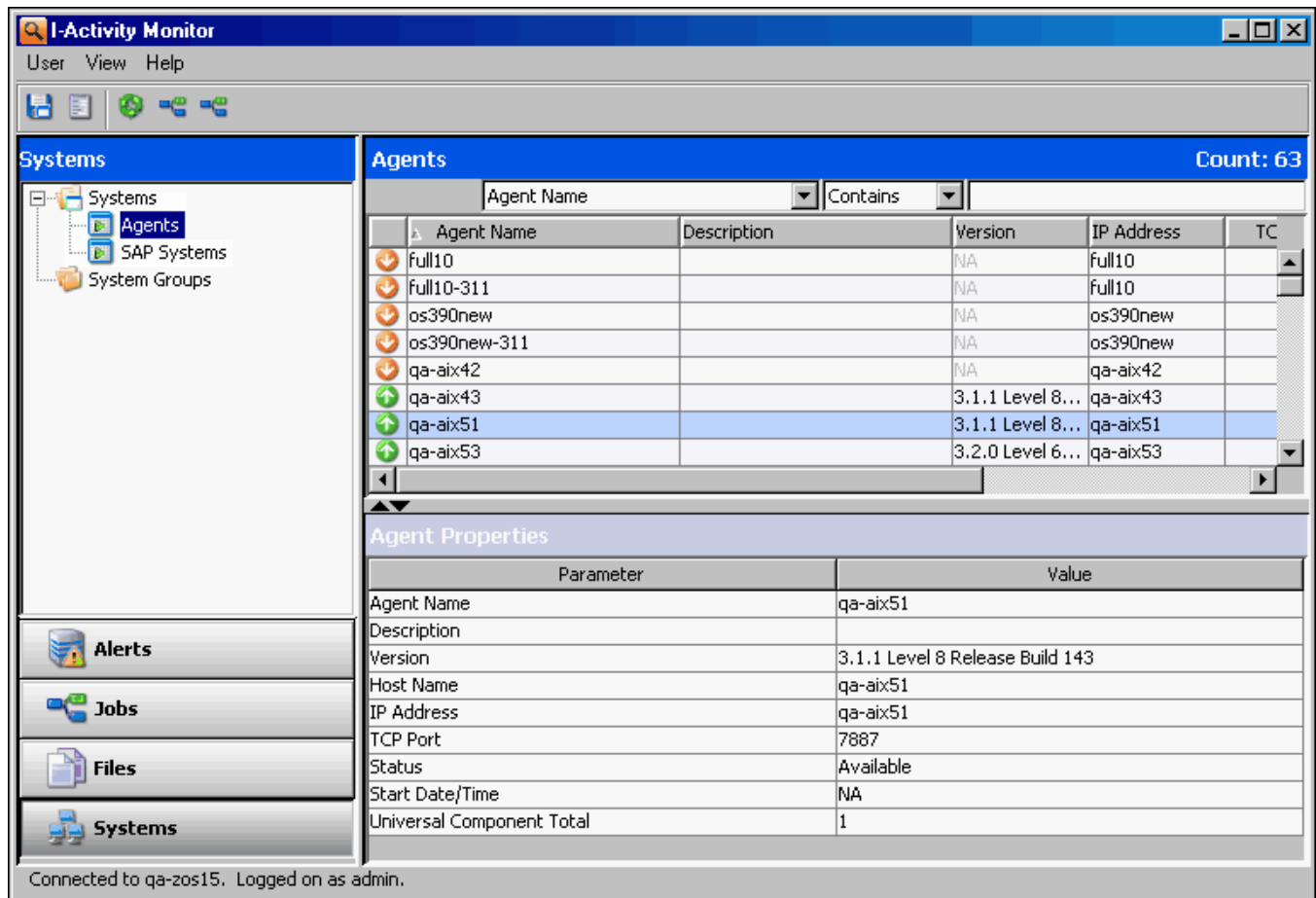
To reflect Indesca and Infitran branding, the Universal Management Console has been renamed I-Managed Console, and the client and client documentation have been updated.



I-Activity Monitor

To reflect Indesca and Inftran branding, the Universal Activity Monitor has been renamed I-Activity Monitor, and the client and client documentation have been updated.

The client has been updated to reflect Indesca and Inftran when displaying jobs and files.



Platform Support

Indesca and Infitran 4.1.0 provides support for the following operating systems:

- IBM z/OS 1.4 – 1.11
- IBM AIX 5.2 – 5.3
- HP HP-UX 11i v1¹ – 11i v3 for PA-RISC
- HP HP-UX 11i v2 – 11i v3 for Itanium
- Sun Solaris 8 – 10 for SPARC
- Sun Solaris 10 for Intel
- Linux kernel 2.4 – 2.6 for Intel 32-bit
- Linux kernel 2.4 – 2.6 for Intel 64-bit
- Linux kernel 2.4 – 2.6 for S/390 and z/Architecture
- NCR MP-RAS 3.02
- HP Tru64 v5.1B
- Microsoft Windows 2000², 2003, XP, Vista, 2008 for Intel 32-bit and 64-bit
- IBM OS/400 (i/5OS, IBM i) V5R3 through V6R1
- JAVA Runtime Environment 1.5 and above

Platform Support Changes

There are no platform support changes introduced with 4.1.0.

¹ HP Patch Bundle GOLDQPK11i_B.11.11.0612.459.depot or above is required.

² Service Pack 4 or above is required.

Operational Changes

This section discusses the operational changes in Indesca and Infitran 4.1.0 and their administrative requirements.

New License Keys

The product names have been changed in the license keys to reflect Indesca and Infitran. License keys prior to 4.1.0 will not be supported.



950 North Point Parkway, Suite 200
Alpharetta, Georgia 30005
U.S.A.